



LAZER
HIGH PERFORMANCE LIGHTING



Vertrieb Schweiz
www.ses-shop.ch

SANTEC Systems AG
Weihermattstrasse 86
CH-5000 Aarau

SES ONLINE
STORE

CONTENTS





04	History
06	Our People
08	Engineering
10	Manufacturing
12	Lazer Customers
14	Lazer Customers – Motorsport
16	Lazer Customers – 4x4 / Road Tuning
18	Lazer Customers – Commercial Vehicles
20	Lazer Customers – Industrial
22	Products
26	Triple-R
30	ST / T Evolution
34	Linear
38	Carbon Series
42	Utility Series
46	Vehicle Integration Kits
48	Accessories
50	Lazer Lamps Online
51	Contact Details

This brochure includes reference to our most popular products and accessories, however we have other products available not included here, but which can be viewed online at www.lazerlamps.com. So too our comprehensive range of bespoke capabilities can be discussed on request from sales@lazerlamps.com.



In considering our products and solutions, where shown, the video icon (left) indicates a relevant video is available to view online at www.lazerlamps.com/videos.

LAZER LAMPS HISTORY

Having been at the forefront of driving light design and innovation since 2002, Lazer Lamps Founder and Managing Director, Ben Russell-Smith, was quick to recognise the potential of LED technology during his time working at Nissan's Technical Centre at Cranfield - UK, and Ford's European Development Centre in Cologne - Germany. With this experience, and background in Mechanical Engineering, Ben left behind these automotive powerhouses to setup a home-based workshop, from where he began designing and engineering the very first Lazer high performance spotlights.





The philosophy from the outset is the same as it is today, striving to bring world class products to customers through the use of the latest and most advanced component technology, innovative design and material solutions, coupled with local supply partnerships wherever possible, to guarantee the performance and reliability of all our products.

From early on, Lazer Lamps products were being adopted across the Motorsport sector, well known for their uncompromising and exacting standards and requirements. In the first year of production the Lazer products had been nominated for three awards within the field of international motorsport, including 'Most Innovative New Motorsport product 2012'.

Success on the track helped give the brand credibility which translated through to confidence for road and off-road users, as

well as the commercial sector, who choose to fit the same products to their vehicles.

Today, Lazer Lamps is a market leader across many different sectors and applications. From the company's UK head office and manufacturing site, Lazer meets the need of an expanding and diverse customer base through key strategic partnerships, and a focused distribution network. These relationships, alongside continuous end-user engagement, is helping drive a product development program shaped around real-world applications and the latest technologies available.



LAZER LAMPS OUR PEOPLE



Fully invested in the Lazer philosophy, the team at Lazer Lamps share the common purpose to only bring world class products to our customers. From the product developers and technicians breaking new ground in LED innovation and design, to the men and women responsible for the precision-engineering that goes into every lamp on our production line, there is a commitment and motivation that comes from being part of a close-knit team achieving great things. Working hard to harness this environment helps ensure everyone delivers to the best of their ability every day.

These same qualities prevail amongst our distributors, carefully selected for their expertise, enthusiasm, and motivation to always exceed customer expectations.

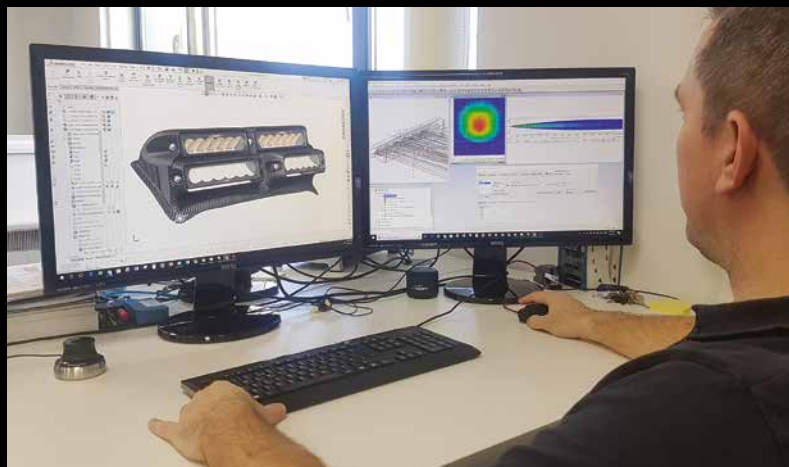




LAZER LAMPS ENGINEERING

Countless hours and resource goes into ensuring the continuation of ideas and innovation which drives both new product development, and constantly improved functionality and reliability of Lazer Lamps' products.





The expertise and knowledge that exists within our engineering team is supplemented by supplier partnerships, each leaders and innovators in their respective fields. Close collaboration guarantees we remain at the cutting-edge of technology, while adoption of state-of-the-art CAD, light simulation & testing software, and 3D dimensional analysis and print, helps ensure the technology is analysed, adopted, and optimised for maximum benefit.

All products are subjected to strict testing, conducted both in-house and at ECE test houses within Europe. In meeting the rigid requirements of vehicle manufacturers and world leaders in both rally and track motorsport, there is no compromise in the high standards we, or our partners, are willing to accept.





LAZER LAMPS MANUFACTURING

We are proud that every one of our high performance lighting solutions has been built in-house, in the UK, within premises accredited to ISO 9001 quality standards. The visibility and control this provides is integral to our mission of only supplying world class products.





With a large proportion of the build process completed by hand, our skilled workforce takes both pride and accountability in their work. An attention to detail is imperative, and their intricate work is facilitated at certain points with state-of-the-art automated equipment, which combined, ensures an exceptionally high standard and consistency to our products. These standards are upheld by end-of-line testing on every product that we produce.

The benefits of in-house manufacture go beyond superior quality control; every operator is

empowered and encouraged to provide regular feedback and suggestions in regards the processes and systems we employ. Alongside the work of our Engineering department, this continuous improvement is to the advantage of the performance and reliability of our products.

**WHERE POSSIBLE COMPONENT PARTS ARE SOURCED
LOCALLY, BY SUPPLY PARTNERS WHO DEMONSTRATE A SIMILAR
COMMITMENT TO PRODUCT QUALITY AND IMPROVEMENT.**







LAZER CUSTOMERS

Our lighting solutions are prevalent across a wide range of customer types from the highest levels of track and rally motorsport, to everyday road use, and commercial applications. Tailored solutions for specific market sectors increases our relevance in key areas, but it is the desire for the very best lighting performance that LED technology can deliver, exceptional design, and superior build quality, that connects all of our customers.



LAZER CUSTOMERS MOTORSPORT

Lazer Lamps has always had a strong motorsport heritage, from the very beginning developing products around the uncompromising requirements of track, rally, and off-road motorsport. Today, we are recognised as being at the forefront of LED driving light design for the sector.

The latest technology and innovation, combines with advanced material solutions, to deliver tangible competitive advantage in the form of superior visibility, weight-saving, reduced power consumption, and improved aero performance. From 'plug and play' high performance spotlights, to bespoke carbon fibre headlamps, we have the solution.





LAZER CUSTOMERS

4x4 AND ROAD TUNING

At the heart of the Lazer Lamps product portfolio is a comprehensive range of ECE approved, road-legal driving lights, which have transformed the everyday driving undertaken by thousands of people. Supplemented with bigger 'off-road' light bars, our products are increasingly the accessory of choice for 4x4, pick-up truck, SUV, and light commercial vehicle owners.

Adoption of the latest technology helps ensure our products perform better than any others, but increasingly we become known for our bespoke vehicle integration kits where the elegant styling and appearance of modern-day vehicles are further enhanced through our lamps' installation.





LAZER CUSTOMERS

COMMERCIAL

Adoption of LED lighting within the truck market has accelerated significantly in recent years; the combination of superior lighting performance coupled with the contemporary and innovative design of Lazer Lamp products has ensured ours are the must-have lighting solution for today's modern trucks.

With a selection of the most powerful road-legal, forward-facing driving lights on the market, and high output work light solutions, the appeal and relevance for our products is boosted further by the introduction of more and more products with dual functionality that enhances both vehicle styling, and lighting performance, while meeting a broader range of applications.





LAZER CUSTOMERS

INDUSTRIAL

The importance of good quality lighting when working at night, or in low-light conditions, cannot be understated. Increasingly, as our product portfolio expands to meet the requirements of the agricultural, construction, and mining sectors, so more and more companies and individuals are realising the benefits of our superior lighting solutions in these environments.

From the LEDs carefully selected as much for their incredible output as for their colour temperature, which is proven to reduce fatigue on the eyes, to the electrical design which protects the lamp against EMC (to CISPR-25 standard), and the electronic thermal management system which optimises light output considering the thermal and surrounding environmental conditions, Lazer Lamp products perform better and are built to last longer.







LAZER PRODUCTS

Lazer Lamps products display an unrivalled quality both in their lighting performance and reliability which is a result of exceptional design, our uncompromising approach to component selection, and superior build quality borne out of our in-house UK manufacturing. While the exact specification of the components and design will invariably change to suit the required light distribution and product styling, there are universal features which form the foundation of every light we produce.

LATEST HIGH EFFICIENCY LEDS DELIVER
EXCEPTIONAL LIGHTING PERFORMANCE

E-MARK CERTIFIED
OPTIONS FOR
ON-ROAD USE

HARDCOATED 'UNBREAKABLE'
POLYCARBONATE LENS
WITH LIFETIME GUARANTEE

HIGH-END LAMP DESIGN
PROVIDES FOR AN OE QUALITY
LOOK THAT ENHANCES VEHICLE
STYLING AND AESTHETICS.

DYNAMIC DRIVE MODULATION*

*DRIVE CURRENT FOR THE LEDS IS MAINTAINED AT THE OPTIMUM LEVEL CONSIDERING
ENVIRONMENTAL AND THERMAL CONDITIONS OF THE LAMP

FULLY VERSATILE AND VARIED MOUNTING SYSTEMS
PROVIDE FLEXIBILITY IN VEHICLE MOUNTING



CAE OPTIMISED HEAT-SINK

E-COAT PRE-TREATMENT
PROVIDES MAXIMUM
CORROSION RESISTANCE

CONCEALED THREADED
SIDE BRACKET
MOUNTING POINT

ULTRA-REFLECTIVE,
VACUUM-METALLISED
OPTICS DELIVER
VARIED BEAM PATTERNS
OPTIMISED FOR
EVERY APPLICATION

LAZER PRODUCTS



M-SPORT
WORLD RALLY TEAM
OFFICIAL TEAM PARTNER



MADE IN THE UK





TRIPLE-R

LAZER HIGH PERFORMANCE LIGHTING 27

TRIPLE-R

Prevalent across all market sectors, the comprehensive Triple-R range includes lamps perfectly suited to a broad range of applications. Recognised for exceptional lighting performance and unique styling, these are high performance LED spotlights that impress day and night.

EXAMPLE BEAM PATTERN (TRIPLE-R 1000 ELITE - E-BOOST MODE)



Developed initially around the uncompromising requirements of the professional motorsport market, the Triple-R range sets the standard in long-range auxiliary driving lights. Since 2015, the range has expanded to include both ECE approved road-legal driving lights, and bigger off-road light bars up to 52" in length that deliver unbelievable levels of light output, tuned for a spot beam pattern.



The Triple-R range is now widely adopted across every market sector we serve. An upgrade to the Triple-R Elite range, has strengthened the appeal and relevance to high-end road and motorsport customers alike, while the advent of products featuring dual-output functionality, which combined with the Triple-R's unique design, make the products a leading option for commercial vehicle owners and operators.

The Triple-R range is available in Standard or Elite specification, the latter products benefiting from higher output LEDs that deliver an intensity of light beyond any other.



SINCE 2015, THE RANGE HAS EXPANDED TO INCLUDE BOTH ECE APPROVED ROAD-LEGAL DRIVING LIGHTS, AND BIGGER OFF-ROAD LIGHT BARS UP TO 52" IN LENGTH THAT DELIVER UNBELIEVABLE LEVELS OF LIGHT OUTPUT, TUNED FOR A SPOT BEAM PATTERN.



LAZER



ST|TEVOLUTION

LAZER HIGH PERFORMANCE LIGHTING 31



ST|T EVOLUTION

The foundation of the Lazer Lamps product range, the ST/T Evolution lamps deliver on many levels, and across a diverse customer base. Lighting performance aside (examples below), the lamps are built to the highest production standards backed up by our comprehensive 5 year warranty.

EXAMPLE BEAM PATTERN (ST-8 EVOLUTION)



Recently re-engineered and re-designed, the ST Evolution range of ECE approved road legal driving lights, and T Evolution range of off-road light bars utilise the latest and most advanced LED technology and electrical design to deliver superior levels of light output. This light is delivered in a 'Drive' beam pattern providing enviable range and spread of light.



Featuring a seamless, contemporary design, the styling of the lights is such that an installation instantly complements and enhances the appearance of any modern-day vehicle. The low profile, precision-engineered aluminium enclosure permits simplified fitting where space constraints might exist, and ensures the products' appeal where a more discreet lighting solution is preferable.

The reflector system design for the ST/T Evolution range delivers light which balances long-range visibility with an all-round spread of light, including close to the vehicle, perfect for off-road and everyday road use.



FEATURING A SEAMLESS, CONTEMPORARY DESIGN, THE STYLING OF THE LIGHTS IS SUCH THAT AN INSTALLATION INSTANTLY COMPLEMENTS AND ENHANCES THE APPEARANCE OF ANY MODERN-DAY VEHICLE.





LINEAR

LAZER HIGH PERFORMANCE LIGHTING 35



LINEAR

Introducing the Linear range, a low profile range of high performance driving lights, which at just 40mm height, benefit from a sleek aerodynamic design that is the perfect compliment to the high-end styling of today's modern passenger vehicles, and commercial vehicles. Across both Standard and Elite grades, all Linear products are fully ECE approved for on-road use.

EXAMPLE BEAM PATTERN (LINEAR-12 ELITE)



On the one hand the products represent our most cost-effective lighting solutions through the adoption of 3W LEDs, the same as used in our 2018 WRC lighting solutions, meticulously engineered and tested to optimise lighting performance for everyday road use, and specifically the passenger car market. On the other, high-end styling coupled with the slimline design helps ensure the lamps are easy to install, and act to minimise drag, while delivering astonishing levels of illumination.

The Linear range combines ultra-reflective vacuum-metallised optics to deliver a finely tuned light distribution which provides for exceptional visibility including at the sides of the road. Meanwhile a comparatively lower up/down spread of light ensures the Linear are lights optimised for mounting lower down at the front of your vehicle.

Boasting twice the total light output of the equivalent Standard products, the Linear Elite range represents the very best in slimline auxiliary LED lighting, where light output has been optimised for everyday road use.



REPRESENTING EXCEPTIONAL VALUE FOR MONEY, THE LINEAR RANGE FEATURES A LOW PROFILE DESIGN PERFECT FOR FACILITATING INSTALLATION WHERE SPACE MIGHT BE LIMITED.





CARBON *S E R I E S*

LAZER HIGH PERFORMANCE LIGHTING 39



CARBON *S E R I E S*

A world first for LED technology, the Carbon Series sets a new standard in auxiliary driving lights for the motorsport sector. Through ground-breaking advances in material design and engineering, the Carbon Series stands apart from all other LED lighting solutions. A full carbon-fibre housing provides for an ultra-lightweight construction, and a power/weight ratio never seen before in automotive lighting.

LAZER



From the colour temperature of the LEDs carefully selected to provide maximum definition and sharpness, to the unique design of both the housing and internal electronics, which includes rear facing LEDs providing greater light utilisation, reduced scatter, and better distribution of light including during heavy braking and acceleration, the Carbon Series delivers. Upgraded in 2018 with the introduction of dual output functionality, drivers have the ability to easily alternate the beam pattern depending on course/track conditions and the weather.

All aspects of the Carbon Series design are borne out of extensive development and testing performed at the very highest levels of professional rally and track motorsport.

With the core product range comprising 2, 6, 16, and 20 LED variants, and with the option to match light distribution to driver preference, at Lazer Lamps we increasingly undertake high-end projects which build on the engineering principles employed in the development of the Carbon Series range, to create bespoke lighting solutions around very specific exacting requirements.



A WORLD FIRST FOR LED TECHNOLOGY, THE CARBON SERIES SETS A NEW STANDARD IN AUXILIARY DRIVING LIGHTS FOR THE MOTORSPORT SECTOR.





UTILITY SERIES

HEAVY DUTY **LED WORK LAMP**



UTILITY SERIES

HEAVY DUTY LED WORK LAMP

Modified for 2018, and utilising the latest high-density LEDs, which provide more light at a carefully selected colour temperature, our revolutionary Utility Series represents the very best in work light solutions. By challenging aspects of conventional work light design and incorporating patent-pending design features we have achieved more light output, improved functionality, and better reliability.



Available as either a 45W or 80W power variant, the Utility Series is exceptionally versatile. The beam pattern has been optimised to provide an incredible spread of light, perfectly homogeneous, but which still manages to project light to distances that makes working in low light or night conditions a much safer, and efficient, operation.

Continuous improvements to the functionality of the Utility Series, alongside an increasing range of accessories and mounting systems, is driven by customer feedback and shared experiences within the commercial vehicle, agricultural, construction, and mining industries, providing all our customers with peace of mind that these lamps have been engineered around real-world application, and to withstand the harshest conditions and treatment.



The varying power outputs available ensures we have the work light solution to suit every application; from mounting off the rear of a 4x4 or pick-up truck, to facilitating the work of heavy machinery in the agricultural, forestry, construction, and mining industries.

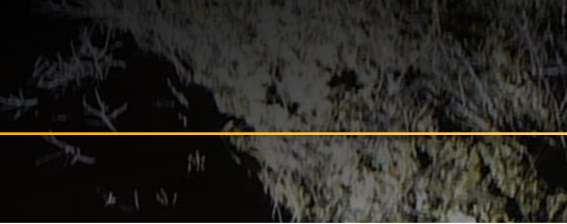
BY CHALLENGING ASPECTS OF CONVENTIONAL WORK LIGHT DESIGN AND INCORPORATING PATENT-PENDING DESIGN FEATURES WE HAVE ACHIEVED MORE LIGHT OUTPUT, IMPROVED FUNCTIONALITY, AND BETTER RELIABILITY.



VEHICLE INTEGRATION KITS

Recognising that the quality of the installation can be as important as the quality of the spotlights themselves, at Lazer Lamps we are increasing our focus on, and provision of, bespoke vehicle mounting solutions. Developed to accentuate the high-end styling of modern 4x4s, pick-up trucks, and light commercial vehicles, the quality of our grille integration kits are representative of the Lazer brand in general, and have a true OE quality look and finish.





Principally developed for the Triple-R 750 high performance driving lights, the benefits of our grille integration kits go beyond just high-end styling. The lighting performance is such that it makes everyday driving in low light or night conditions a far safer, more relaxing experience. From a fitting perspective, the grille integration kit allows lights to be mounted on the vehicle in as little as twenty minutes, providing even more time to stand back and admire the end result.

With the design, engineering, and production all done in-house, we have simplified and streamlined the process of product development and production to help ensure availability of kits for the very latest vehicles as they come onto the market.



Our grille integration kits, like the lights themselves, are built to the highest standards, providing a robust installation that is both secure and resistant to adverse road (or off-road!) and weather conditions.

DEVELOPED TO ACCENTUATE THE HIGH-END STYLING OF MODERN PICK-UP TRUCKS AND LIGHT COMMERCIAL VEHICLES, THE QUALITY OF OUR GRILLE INTEGRATION KITS ARE REPRESENTATIVE OF THE LAZER BRAND IN GENERAL, AND HAVE A TRUE OE QUALITY LOOK AND FINISH.

LAZER ACCESSORIES





To facilitate, compliment, and/or enhance your Lazer Lamps setup we have available a range of accessories including: a comprehensive selection of 12V vehicle wiring kits, can-bus vehicle integration kits, mounting solutions, and impact protection covers.

Designed to provide our customers with the flexibility to modify light distribution dependent on driving style and surroundings, our range of acrylic Reeded Lenses are another example of how we use innovation to provide more added-value in our lighting solutions.



LAZER LAMPS ONLINE

The Lazer website provides the ideal portal for browsing our complete range of products. As well as comprehensive information and specifications for all our products, for all of our forward-facing driving lights we have high resolution photographs of the beam pattern so that you can see and appreciate the performance of our products allowing you to purchase in complete confidence.



NEWS & MEDIA

Product information aside, the Lazer Lamps website also features a comprehensive image gallery showing a wide variety on vehicle installations, a video library, and press release section.

IN THE SPOTLIGHT

Want to find out more about the latest technology, advice on installations, or the specific activities of Lazer Lamps or our partners, check out the 'In The Spotlight' section of our website - we're sure you'll find it enlightening!



/lazerlamps



/lazerlamps



/lazerlamps



/lazerlamps



Made in the UK



HEAD OFFICE

Lazer Lamps Ltd, Units 1-2, Harlow Mill Business Centre
Riverway, Harlow, Essex CM20 2FD, United Kingdom

Tel +44 (0) 1992 677374
Email sales@lazerlamps.com

Registered in England & Wales No. 07247056
VAT No. GB992466082

LAZER
HIGH PERFORMANCE LIGHTING

WWW.LAZERLAMPS.COM

T +44 (0) 1992 677374 E SALES@LAZERLAMPS.COM

LAZER LAMPS LTD, UNITS 1&2, HARLOW MILL BUSINESS CENTRE, RIVERWAY, HARLOW, ESSEX CM20 2FD, UK



LAZER
HIGH PERFORMANCE LIGHTING

All content included in this brochure (including, but not limited to, logos, images, photos, designs, graphics and text) is the property of Lazer Lamps Ltd and as such is protected by UK and international copyright and other intellectual property laws.

©2018 Lazer Lamps Ltd. All rights reserved.

Vertrieb Schweiz
www.ses-shop.ch

SANTEC Systems AG
Weihermattstrasse 86
CH-5000 Aarau

SES ONLINE
STORE